The background of the slide is a photograph of a snowy mountain slope. A ski lift is visible in the upper right, and a skier is seen in the distance on the right side. The text is centered over the image.

2022 Ponsonby Primary School Ski Squad

Goal of PPST

Encourage participation and a love of skiing

To support the development of good skiers

To provide a pathway for PPS students to participate in competitive alpine ski racing

To allow the maximum number of PPS skiers to compete safely at NIPS

PPS policy - NIPS, Race and Learn to Race Year 4-6 only

Your child can continue to train with PPS at Snow Planet if you decide not to participate at NIPS this year.

What is NIPS

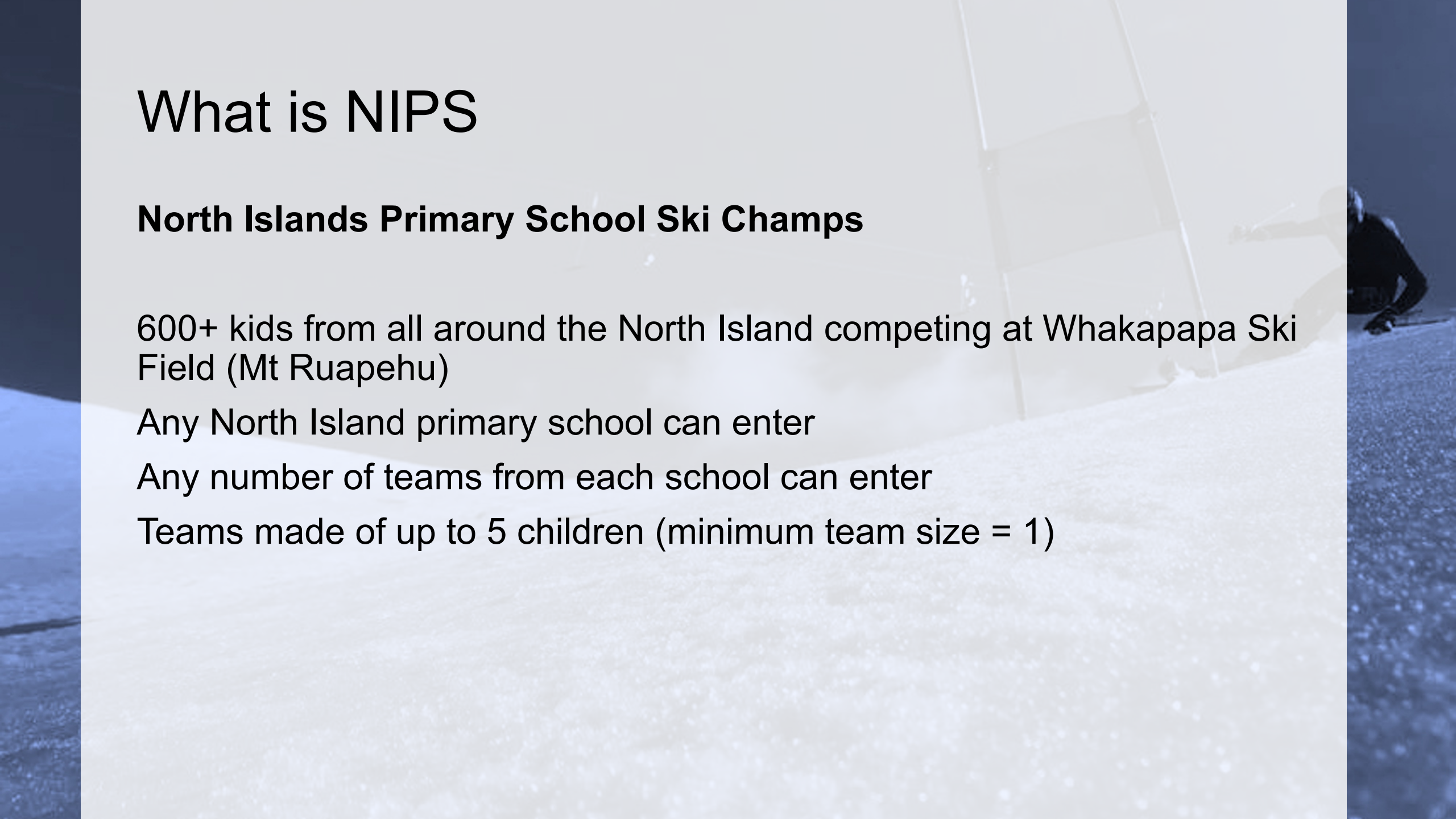
North Islands Primary School Ski Champs

600+ kids from all around the North Island competing at Whakapapa Ski Field (Mt Ruapehu)

Any North Island primary school can enter

Any number of teams from each school can enter

Teams made of up to 5 children (minimum team size = 1)



NIPS Dates / Schedule

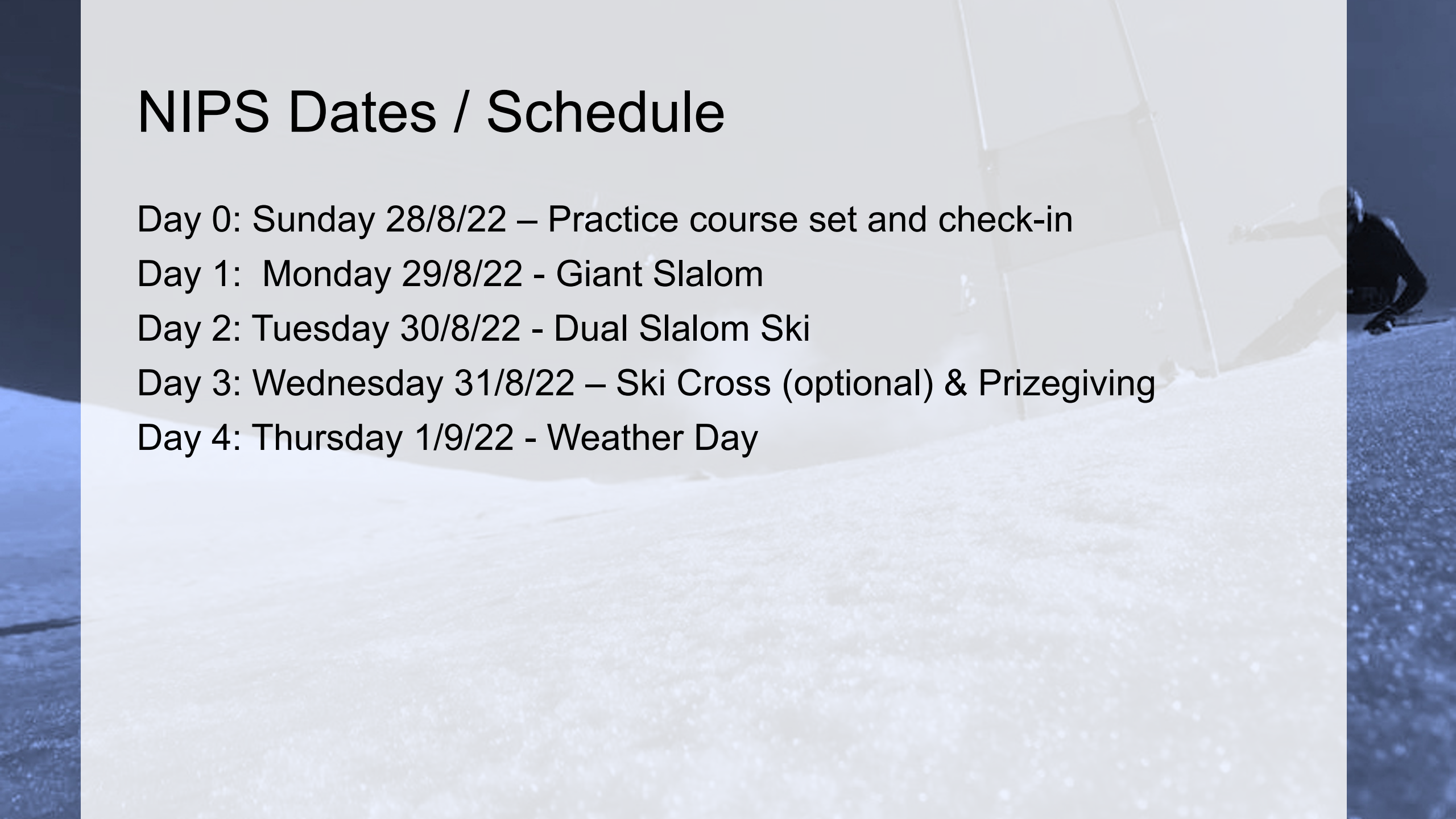
Day 0: Sunday 28/8/22 – Practice course set and check-in

Day 1: Monday 29/8/22 - Giant Slalom

Day 2: Tuesday 30/8/22 - Dual Slalom Ski

Day 3: Wednesday 31/8/22 – Ski Cross (optional) & Prizegiving

Day 4: Thursday 1/9/22 - Weather Day



Giant Slalom (Day 1)



Dual Slalom (Day 2)



Ski Cross (Day 3)

Challenges

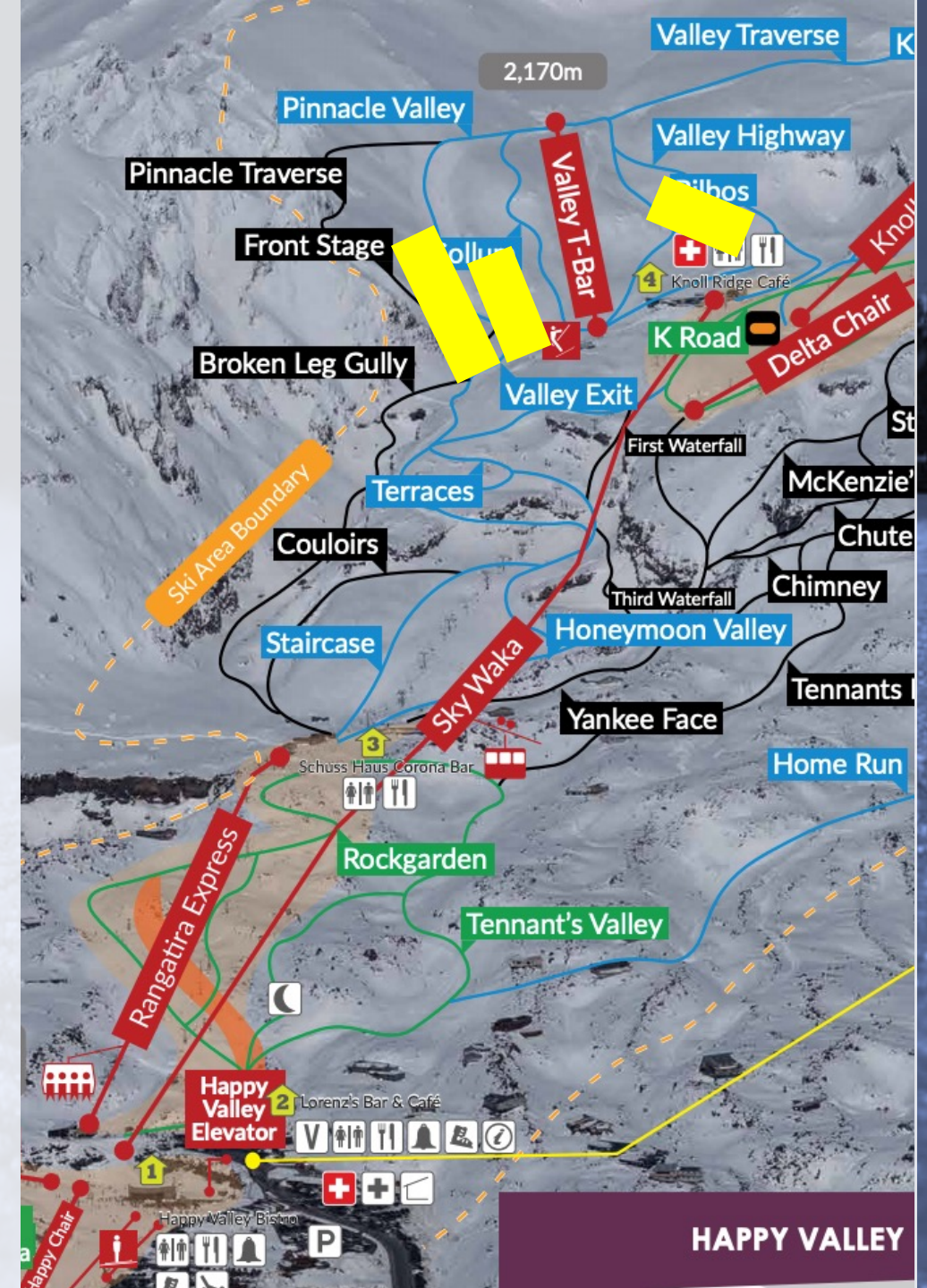
Senior kids need to walk up to the T-Bar to get back to the top of the course or café.

If juniors miss the run to KRC they have to come up the T-Bar

If you miss the T Bar you have to ski all the way to the bottom and come up Sky Waka again

That can take an hour on race day

Broken Leg Gully is called that for a reason...



Why we need (lots) of parents...

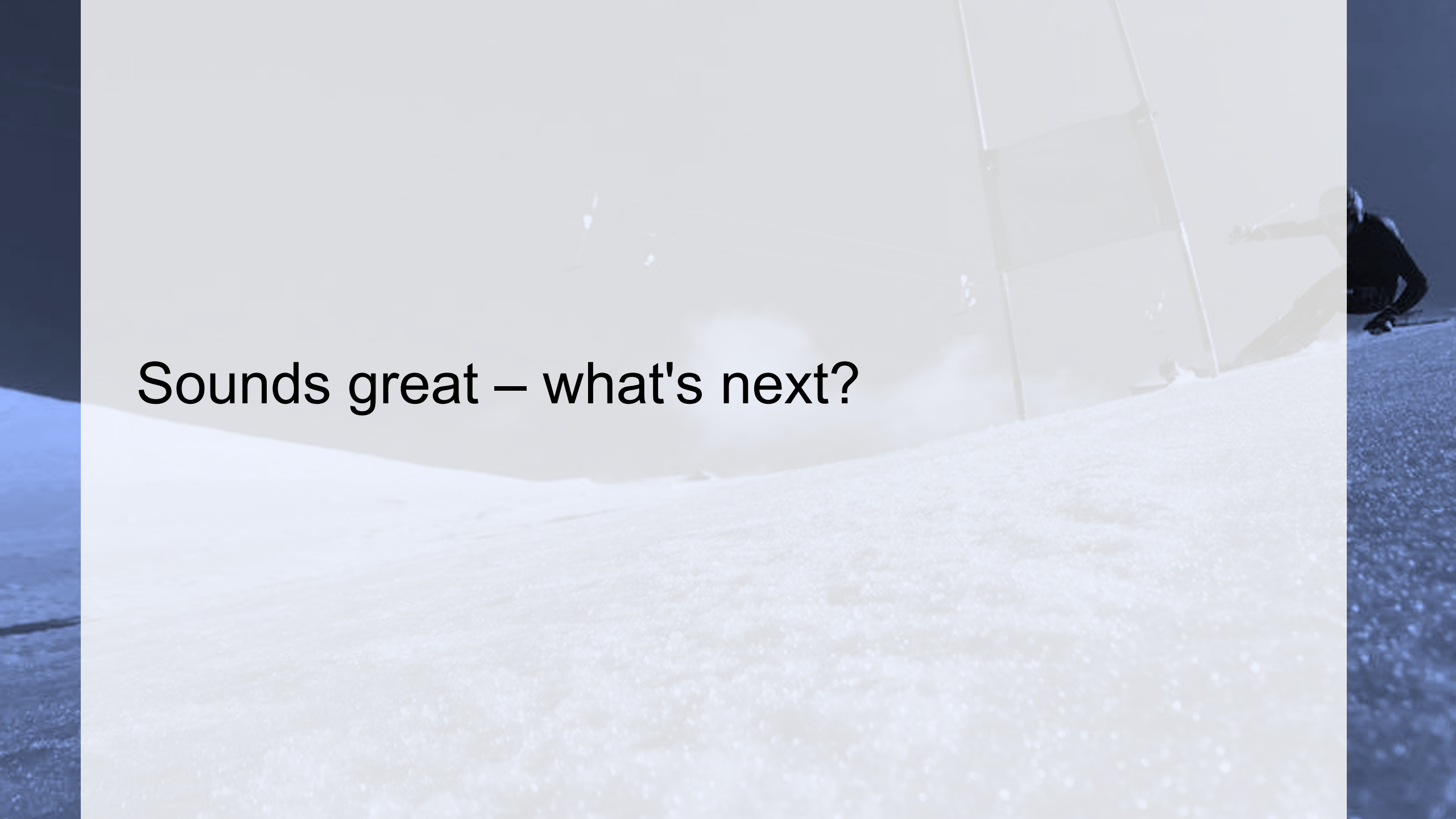
- This event doesn't happen without a lot of on-mountain support from parents and volunteers.
- It's not just about looking after your child – the safety of the entire PPST squad is paramount.
- There are a number of official and unofficial roles we need to fill to ensure the safety of the PPST kids.
- These include
 - Team Manager (Official)
 - Course Assistant (Official)
 - Top Course Runner (Unofficial)
 - Lower Course Runner (Unofficial)
 - Café Support (Unofficial)

Team Selection

- The team is made up of up to 5 athletes – the top 4 athletes' points used.
- Teams will be selected to maximize the results for PPS – just because your child is the 15th fastest doesn't mean you are in the top 3 teams.
- Performance from the season will be used or without adequate data, the results from the PPS Ski Champs will decide seeding.
- 3 race teams and any number of development teams.

Accommodation & Transport

- To build a team culture and to maximise fun PPST is using Skotel as a base.
- Range of rooms and cabins available \$146-\$255 / night (wholesale rate applied)
- Full restaurant/bar with various options.
- Transfer cost TBC
- Onsite tuning and hire are available at Edge to Edge
- You can stay at your own accommodation if you wish
- We use buses for transporting students and parents up the mountain as parking and logistics are challenging at Whakapapa.

A person in a wetsuit is surfing on a wave. The wave is breaking, creating a large, white, foamy crest. The background is a hazy, light blue sky. The overall scene is dynamic and captures a moment of action in a natural setting.

Sounds great – what's next?



Life's more fun on

SNOWPLANET™

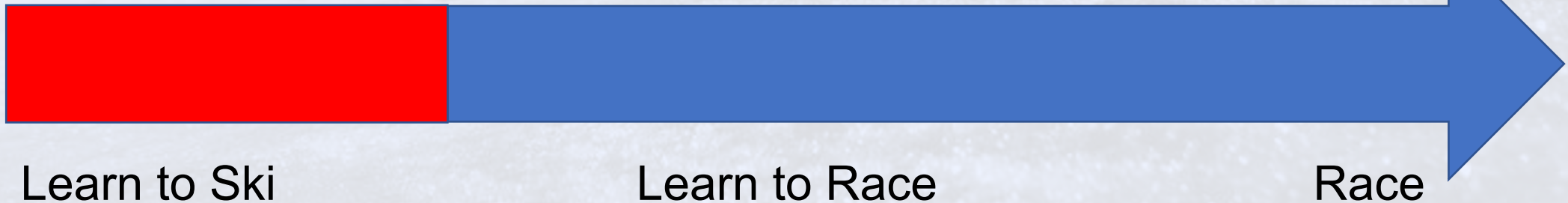
PPS Collaboration with

PPS are once again collaborating with Snow Planet Snow Sports Academy

- Training
- Athlete development
- Team selection

Sunday

Friday Afternoon



Snow Planet Programs

Race / Learn to Race – Friday 12 May – Friday 26th August

- **Race Program** – for those that have the proper ability to navigate a racecourse showing basic race technique and understanding (ie: proper stance, balance, parallel steered turn) Having been through a race cross before does not mean a participant qualifies for this group
- **Learn to race programs** – this program focuses on establishing a base set of fundamental skills and putting them all together to make a complete skier and in the process of participant improvement, we add the challenge of the race element. Participants must be able to snow plow from the top of Snowplanet with confidence.

Learn to Ski - Sunday 12 June – July 3rd July

- This program offers a fun and safe environment for students to learn skiing and snowboarding. Our team will help the students learn and improve over the term, from first-timers to more experienced abilities.

Training Sessions

All sessions are 90 minutes

Students need to be on the slope fed and ready to go at 1.45

Groups split based on skill levels.

Race / Learn to Race

- Instructor-led - using the lead and follow method.
- The focus is on developing base skills and confidence
- Drill work followed by gate work
- Courses will be slipped by the athletes regularly.
- Lanes are shared by all racers.
- The coach is stationed at the top or bottom of the course depending on group size and abilities. In some cases, coaches will be at the top and bottom of the course.
- Feedback is given as required. Each run is watched but feedback is not necessary for each run. Movement patterns are learned through doing and repetition.
- Teachers/Parents are not allowed on the snow or in the coaching lanes unless having undergone the facilities Health and Safety induction.
- Helpers are welcome but should not get in the way or contradict coaches in any way. If helpers are unsure of what to do please ask.

Schedule & Costs

Race / Learn to Race (Friday afternoons)

- Training runs from Friday 13 May – 8 July (8 weeks – included TOD, excludes Matariki). Term 3 will run the same to 26th August before NIPS.
- Every Friday afternoon – children picked up at 1pm to be on snow at 1.45 – 3.15pm
- Cost \$312 for members (\$39/session) or \$392 for non-members (\$49/session)
- Minimum of 8 athletes per level required

Learn to Ski & Snowboard (Sunday afternoons for 4 weeks)

- Sunday 12 June - 3 July 3-5pm
- Cost \$296 (\$37 per session and includes ski / pole hire and slope access)
- Minimum of 8 athletes required – one snowboard group only.

Next steps

- If you are interested in the race / learn to race please email Sanjay with your child's name, room number and you will be provided with a link to register online at Snow Planet
- If you are interested in the learn to ski program please register online at Snow Planet using this link

<https://events.mygameday.app/#/event/landing-page/ponsonbyprimarysundayst2>

- Sibling skiing on Friday – parents responsibility to manage – can co book an instructor – contact Michelle Simpson @ Snowplanet for details. Michelle@snowplanet.co.nz
- Ponsonby Primary Ski Squad 2022 on Facebook.

Questions & Answers

A person in a wetsuit is surfing on a wave. A large flag is attached to the surfboard, and the surfer is holding onto it. The background is a bright, hazy sky.