

# Ponsonby Primary School

## Te Kura o te Rimu Tahi

Kia ora whānau,

Today we held our annual Year 5-6 swimming sports. It was such a fantastic day! All our children were involved and every child had a go! Our children were resilient, encouraging and I was truly proud of them all. Congratulations to all students who placed but also a big congratulations to all of our students for completing what would have been a huge effort for some. A big thank you to Mr Connor and Mr Bergin and all of our wonderful teachers who did such a great job on the day.

We are also in the middle of organising our first major fundraiser which takes place in Term 2. For our new parents this is known as the Taste of Ponsonby, a live auction evening which is always a popular parent social event to mark on your calendars! Your class parent liaison will be sending you some information about the event and how you may be able to support the school with the Taste of Ponsonby. We are also looking for any items that can be donated for our auctions, previous donations which have been popular are vouchers, items, experiences, weekend bach use, fishing trips etc. We are happy to take any donations for our event, please email me on [srama@ponsprim.school.nz](mailto:srama@ponsprim.school.nz) if you are able to donate anything. The money raised will be going towards upgrading our puriri playground.

A big thank you to all of our teachers for their hard work this week with the Three Way Learning Conversations and the work that they have all put in this term. We are very lucky to have such a dedicated staff.

Yesterday, we practised our emergency procedures and conducted a lockdown drill. The procedures we follow allow us to respond safely and quickly to a range of situations. We are pleased to inform you that our practice yesterday went very well, with our students responding safely and calmly. You would have received a text regarding our lockdown drill. If we did go into lockdown you would receive a text and in that text it will state any information regarding a lockdown incident. We will also put updated information on our school website. The website will be the first port of call.

**Have a fantastic long weekend and remember our school is closed on Tuesday the 2nd of April and we will be back to school on Wednesday the 3rd of April.**

Ngā mihi  
Sanjay Rama

### TERM 1 DATES

2 Feb - 12 Apr

### UPCOMING REMINDERS

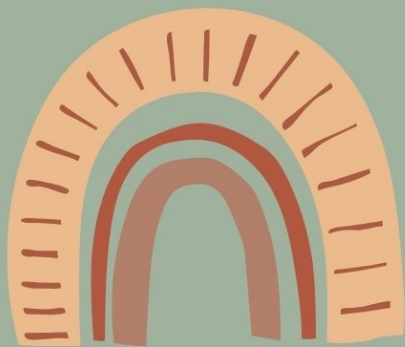
- The next public holidays are  
**Friday the 29th of March**  
(Good Friday)  
**Monday the 1st of April**  
(Easter Monday)  
**Tuesday the 2nd of April**  
(School holiday)
- The next Teacher Only Day is  
**Friday the 31st of May.**



# Year 5 & 6 Swimming Sports







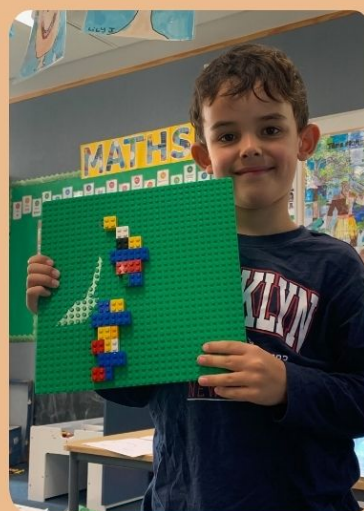
# Room of the week Room 15

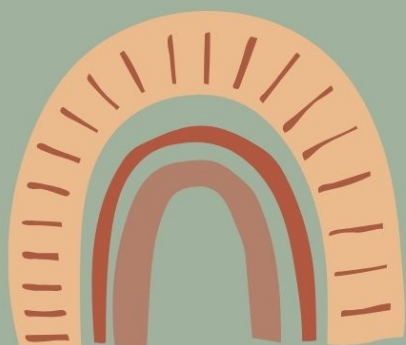


## CLASSROOM NEWS

In Room 15 we have had a fabulous term!!

We love swimming and getting cool in the pool! We use our fantastic LEGO table to complete weekly Maths and Literacy LEGO challenges!





# Room of the week Room 15



# PPS MERCHANDISE



## CUSTOM SCHOOL HOODIE

Dark Navy Blue



\$50

Marle Grey



## HYDRO FLASK

\$89



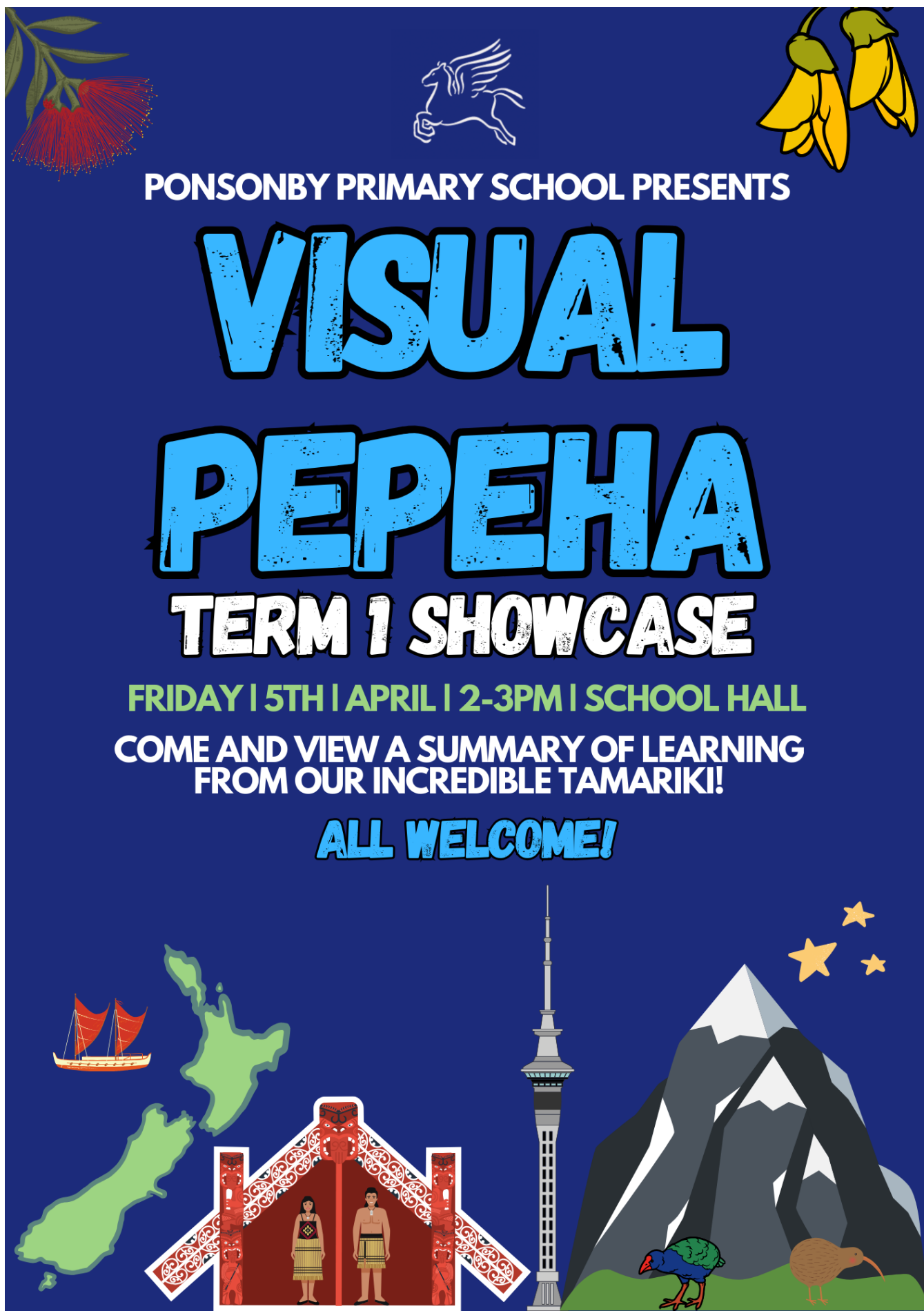
SCHOOL  
LOGO

## HOW TO ORDER

Purchase online via the kindo app or website or through the school office

**ORDERS CLOSE  
FRIDAY 12TH APRIL  
(LAST DAY OF TERM 1)**





# ADVERTISEMENTS



The mighty U11 Bee Gee Williams Ponsonby Rugby Team is seeking 2-3 additional players for the 2024 season.

For players to be eligible, they must be 10 years of age on the 1st of April, and be 45kgs or less. If your child is interested, please email Scott Munday at [scott.munday@hotmail.com](mailto:scott.munday@hotmail.com) and he will provide you with the registration and training details.


The Ponsonby Club is celebrating their 150th anniversary this year, so a great time to join Ponsonby Rugby.




FREE event  
for parents

## Supporting Young People To Be Safer Online

Join us for a free presentation & discussion for Parents & Whānau

 9th of May from 5:00pm - 6:00pm

 Ponsonby Primary School

Netsafe's Education Advisor will talk about the risks, challenges and opportunities of digital technology, and the practical ways we can help young people to be safe online.

There will be plenty of time to answer your questions.

## Far Far Away Children's Gift and Party Hire Boutique

We are a stylish and fun children's gift and party hire Boutique based on the beautiful Hibiscus Coast, just over half an hour's drive from Ponsonby

Offering unique children's gift options sourced from all over the globe under one roof, for example we have a large range of beautiful quality Fairy Dresses and accessories, due to this we are now being recognised as, Far Far Away, the Fairy Shop on the Coast

Additionally, we are scooping quality Italian styled Gelato in store, 13 yummy flavours to choose from, perfect to grab a scoop or two or three and head off to one of our seven beautiful beaches we have on offer

Shop Location

Shop 1, 1 Wade River Road, Whangaparaoa  
(opposite end of the block of shops to Mitre10 Whangaparaoa)

Open

Wednesday – Friday 10am – 4.30pm

Saturday 10pm – 2pm

Sunday, Monday, Tuesday, Public Holidays – Closed

Follow us on our social/s: Keep up to date with new arrivals, what's coming up at Far Far Away

Instagram: @farfarawayevents

Facebook: farfarawaynz

