

# Ponsonby Primary School

## Te Kura o te Rimu Tahi

Kia ora e te whānau,

As we approach the end of this term, we want to take a moment to reflect on our accomplishments and extend our gratitude to everyone who has contributed to our collective success. It has been a memorable period filled with growth, achievements, and valuable experiences. Ranging from our school swimming sports, Inner city sports events and students sharing their learning around their visual Pepeha and their learning journeys at the three learning conversations. We are a school that never stops learning.

I just wanted to say a big thank you to all the classes who have run assemblies this term. All of the assemblies have been of such a high standard.

Again, our teachers have done an amazing job this term, a big thank you to all our staff for the fantastic work that they do, they are all in need of a well deserved break.

Tomorrow our lovely Ms Kingston is getting married, the children put on a lovely assembly for Miss Kingston. We wish Ms Kingston all the best on her special day.

Over the holidays please keep yourself and your family safe and active. Take advantage of the time you can get because if it is anything like Term 1, it will go quickly.

Our annual Taste of Ponsonby School Fundraiser is coming up next term on Friday the 7th of June. The theme this year is Viva Las Vegas! This is a wonderful evening filled with delicious food and drinks and a chance to grab yourself some incredible auction items. All money raised will be going towards upgrading our Puriri playground. Tickets will be available to purchase early next term. We are currently on the lookout for any exciting auction items. Any support with securing any auction items would be much appreciated. If you could help in any way please email me [srama@ponsprim.school.nz](mailto:srama@ponsprim.school.nz).

Keep up simple routines throughout the holidays; this will help in the long run. Schools are a place of learning that supports the values that are taught at home. The home will always be the first teacher of our students. One such value is going to bed at a reasonable time to ensure the brain is fully rested and continues to grow.

Enjoy the term holidays!

Ngā mihi  
Sanjay Rama

### TERM 1 DATES

2 Feb - 12 Apr

### UPCOMING REMINDERS

- Last day of Term 1 is today  
**Friday 12th of April**
- Term 2 begins  
**Monday 29th of April**
- Year 4-6 Cross Country  
**Tuesday 7th May**
- Inner City Cross Country (Years 5 & 6)  
**Thursday 16th May**
- Junior Cross Country  
**Tuesday 21st May**
- The next Teacher Only Day  
**Friday 31st of May**

## Room of the week

# ROOM 5



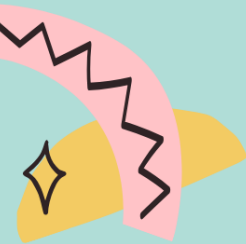
It has been a fun and busy end to the term in room 5. The students have been focusing on working collaboratively with partners and taking risks with our learning in the classroom.

In Kowhai, we have also started training for our school country that is scheduled for Tuesday, 7th May at Grey Lynn Park. It would be fantastic if students are able to complete a few training runs over the holiday break.

We have been using open ended math warm ups as part of our math lessons to increase engagement and promote discussion of our mathematical thinking.

The class also worked very hard on creating their 'Visual Pepeha's' which they presented last Friday. Each student brought in some taonga (treasures) that represented themselves or their family. Their final presentations were very impressive and it was amazing to learn more about their backgrounds and family stories.

Room of the week



**ROOM 5**



### Term 1 maths at PPS

What a fantastic term of maths we have had here at PPS. This term our learning focus has been Place Value, Addition and Subtraction strategies and Algebra. All children have participated with enthusiasm and thrived in these areas.

Maths at Ponsonby has been a major focus for staff and their professional development over the last 3 years, in doing this we have seen huge growth in the achievement of our tamariki.

In class students will have collaborative problem-solving sessions, teacher-led workshops and follow-up activities. Maths at Ponsonby is very much a hands-on approach, teaching our children to work with others effectively, be critical thinkers, and know they are all mathematicians.

Problem solving is a big part of the way we teach mathematics and is vital to the development of students' learning to increase their mathematical confidence and disposition, increase their collaborative skills and promote maths in the real world.

Our wonderful tamariki can:

- - Ask questions when they don't understand
- - Explain their thinking so others can understand
- - Use different ways to show their solutions
- - Revise their thinking when they learn new information or strategies
- - Understand that mistakes are learning opportunities
- - Be complex problem solvers and critical thinkers
- - Think creatively
- - Work collaboratively with others

We are so proud of them all and can't wait to get stuck into our Term 2 topics, which are Multiplication and Division and Measurement.

Going into the holidays you could support your children by maintaining their quick recall of basic facts. You can do this through the websites the teachers have given or when driving in the car and doing quick fire fact recall.

Have a wonderful and restorative break.

#### A Mathematician is someone who...



uses their imagination predicts  
explains their answers shares ideas  
looks for patterns asks questions  
estimates solves problems  
explores experiments

**A Mathematician is someone like you!**

#### A MATHEMATICIAN is someone who...



asks questions estimates  
shares ideas looks for patterns  
explores uses their imagination  
explains their answers experiments  
solves problems predicts

**A MATHEMATICIAN is someone like you!**

# PPS MERCHANDISE



**CUSTOM  
SCHOOL  
HOODIE**

**Dark Navy Blue**



**\$50**

**Marle Grey**



**HYDRO  
FLASK**

**\$89**



**SCHOOL  
LOGO**

**ORDERS CLOSE  
FRIDAY 12TH APRIL  
(LAST DAY OF TERM 1)**

## HOW TO ORDER

Purchase online via the kindo app or website or through the school office

# ADVERTISEMENTS



**HOLIDAY PROGRAM**

APONSONBY INTERMEDIATE

APRIL  
**MON 22ND** **TUES 23RD**

9AM - 3PM

AGES 8 - 11

**COST: \$150**

To register please contact  
[matt@baycityslick.com](mailto:matt@baycityslick.com)

Please note this is a 2 day holiday program, not a 1 day only program

Any Year 4s keen to join a super fun winter sports rugby team?? We are keen to recruit a few more players! Games are on Saturday mornings with a training during the week, day TBC. The grade is U9 contact rugby (weight restricted to under 35kgs) at Ponsonby Rugby Club, who are celebrating 150 years this year.

If interested either register on the Ponsonby Rugby Club Junior Rugby website:  
<https://www.sporty.co.nz/viewform/143013>

or with any queries contact:  
 Janie Loveridge 021 856 511

MELISSA PAVLOVICH  
 Art Academy

CLASSES party! KIDS ART TESTIMONIALS ABOUT

KIDS ART CLASSES

When it comes to art there is no right or wrong. Art is in the eye of the beholder. We want children to understand this and give them the confidence to express themselves in their artwork by making their ideas come to life.

Ponsonby Primary School  
 Tuesday 3.05 - 4.05pm  
 Email: [melissapavlovich@gmail.com](mailto:melissapavlovich@gmail.com)  
 Phone: +6421-424723

## LOST PROPERTY

LOST PROPERTY

If your child has lost any items of clothing during the term please take a look through the lost property on the mezanine in the school hall after school today. All unnamed items will be donated to charity at the end of Week 2, Term 2.